

Berkshire Healthcare Equity Partnership Group

Independent Expert Equity Partner

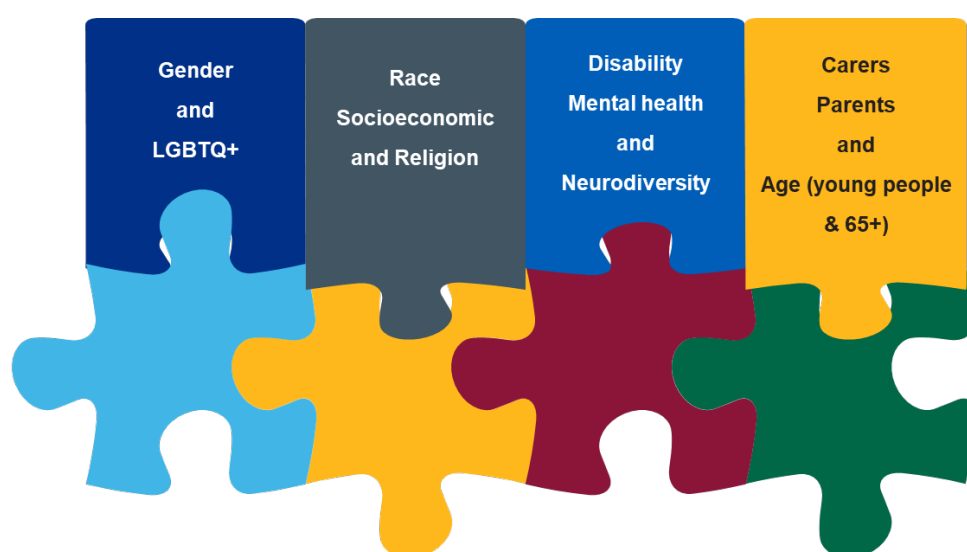
Thank you for your interest in joining the Berkshire Healthcare Equity Partnership Group (EPG) as an Independent Expert Partner.

This is a unique opportunity to impact inclusive healthcare, take a community-driven approach, and engage in open and honest discussions with an outcome focus.

Role overview

As an EPG Partner, you will provide independent expert scrutiny and strategic challenge, ensuring that our equity commitments are robust, evidence-based, and effectively implemented and evaluated. You will monitor and support accountability by holding systems and leaders to account for progress on equity outcomes, while fostering inclusive leadership.

There are currently four key areas, and in this role, you will be expected to specialise in one of them, whilst working together to address inequity, so that we can be a great place to get care, for everyone.

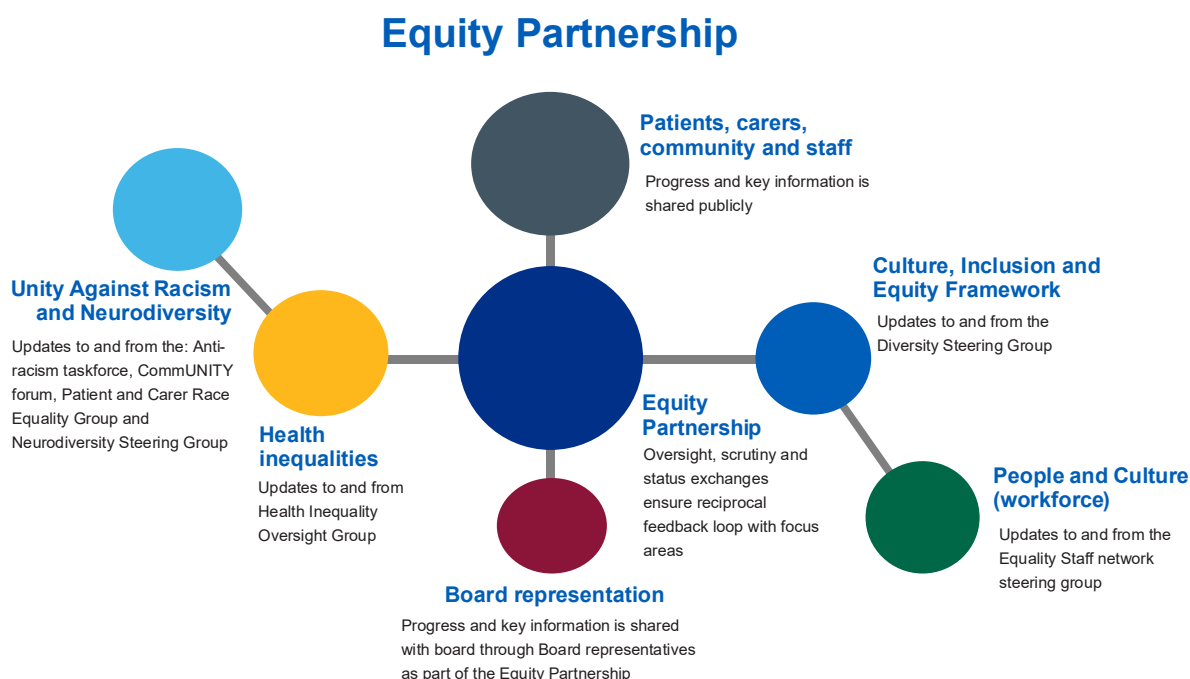


Key responsibilities

- **Scrutiny and oversight:** Critically review approaches, performance data, and strategic plans to assess their impact on equity. Where relevant, make recommendations to policy, practice and programmes to enact change and improve approaches.
- **Accountability:** Challenge assumptions, highlight gaps, and ensure that the voices of underserved communities are reflected in decision-making processes.
- **Evidence-based:** Draw on lived experience, community insight, and positive practice to assess the effectiveness of inclusion interventions.
- **Governance:** Participate in meetings and sub-groups to provide independent, constructive scrutiny of equality-related matters.
- **Intersectional perspective:** Work together as a group to ensure that scrutiny reflects the complexity of intersectional identities and inequities.

What we are looking for

- Someone who has successfully tackled systemic inequity within community or organisational settings.
- You should have personal lived experience and expertise in the relevant equality area, such as in public health, workforce equity, co-production, academia or community leadership.
- You need to be able to analyse and understand data, reports, and policy documents through an equity perspective, confidently contribute to strategic decisions and be open to feedback.
- You should be willing to discuss sensitive and difficult topics and to understand NHS governance and accountability.



Benefits

This role is pivotal to holding us to account and provides an opportunity to impact inclusive healthcare and engage in community-driven and outcome-focused discussions. The EPG is an opportunity to influence key areas of equity strategy with leaders of the organisation.

We will be honest and open about what we think we do well, but also what we could do better.

We will reimburse reasonable expenses and you have the option to be paid for the time spent preparing and participating in meetings through our lived experience expenses. If you need advice about how this impacts welfare benefits, please get in touch with us.

Item	Total (£)
Regular Meeting Payment (Includes preparation and 2 hour meeting)	£90
Travel and out of pocket expenses	Variable
Optional Deep Dive Session (Includes preparation and 2 hour meeting)	£90
Optional Ad Hoc Paper Review for Specific Projects (1 hour)	£25

Commitment

The role requires a commitment of approximately 4 to 6 meetings per year. The meetings will be 2 hours in duration and preparation will be expected prior to the meeting with papers and agendas shared in advance.

Expert partners will start with an initial term of 12 months after which we will review the EPG. Meetings will be closed so that discussions can be candid and confidential, but outcomes will be transparently published. We expect all members of the EPG to share a bio, and where possible a photo that will be featured on our website along with updates on outcomes of meetings.

Application process

To apply for this role, please complete an [Expression of Interest Form](#) outlining your relevant strategic and lived experience in your specialist field, before 3 October 2025.



Scan me

**Fill in the Expression of Interest Form
before 3 October 2025**